

# MAKE THE MOST OF YOUR STAY

Things to do when visiting Warwick Conferences



WARWICK  
CONFERENCES





## WARWICK SPORTS & WELLNESS HUB

[Find out more.](#)

Brand new sports hub. 5 minutes' walk from Scarman and Radcliffe and 10 minutes' walk from Central Campus Venues. Residential guests enjoy complimentary access to the pool and gym.



## WARWICK ARTS CENTRE

[Find out more.](#)

A place where we can all meet, 3 brand new cinemas showing the latest film releases. Located just a 5 minutes' walk from Scarman and Radcliffe and just metres away from Central Campus Venues.



## MEAD GALLERY (DURING TERM TIME)

📍 [Find out more.](#)

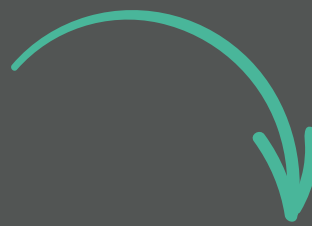
Located in Warwick Arts Centre, the Mead Gallery is one of the most distinctive exhibition spaces in the UK.



## WARWICK SCULPTURE TRAIL

📍 [Find out more.](#)

A self-guided walk around the outdoor artwork on campus. We have many sculptures spread out across the University.



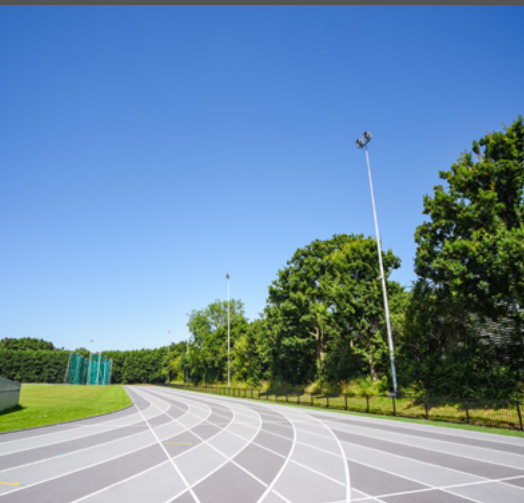




## CAMPUS WALKS

[!\[\]\(c3d993ca47bfe2a953c700506ce31fa0\_img.jpg\) Find out more.](#)

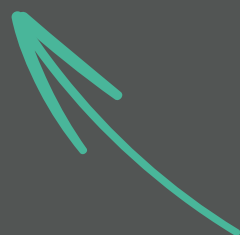
Our campus is home to several short walks and green spaces. Why not explore some of our/ the natural areas and improve your wellbeing at the same time?



## RUNNING ROUTES

[!\[\]\(d3102649f02e825ddb76dc3de0190154\_img.jpg\) Find out more.](#)

Get your feet out and about and run, jog or walk at your speed with a like-minded community of movers.



# CENTRAL LOCATION

Why not book an additional nights' stay with us and take in some of the local areas.



Kenilworth - 3 miles

Coventry train station - 3.6 miles

Coventry - 4.1 miles

Leamington Spa - 8.8 miles

The NEC Birmingham - 10 miles

Birmingham airport - 11.1 miles

Birmingham - 22.5 miles